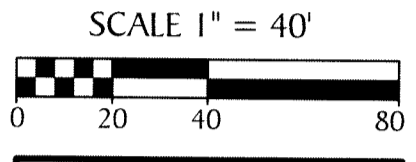
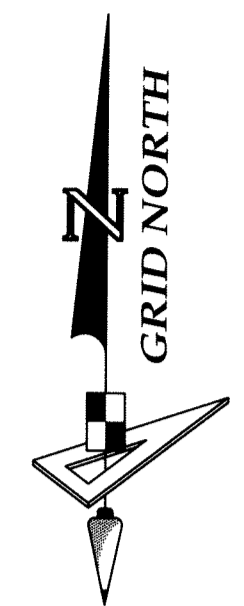
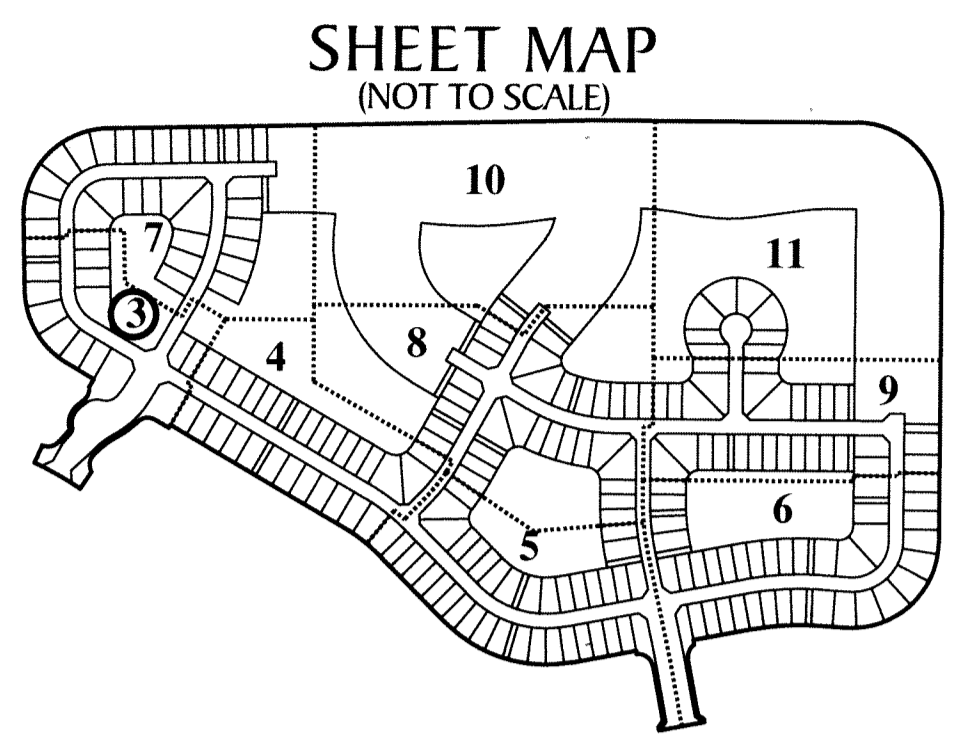


HAMMOCKS OF WESTLAKE

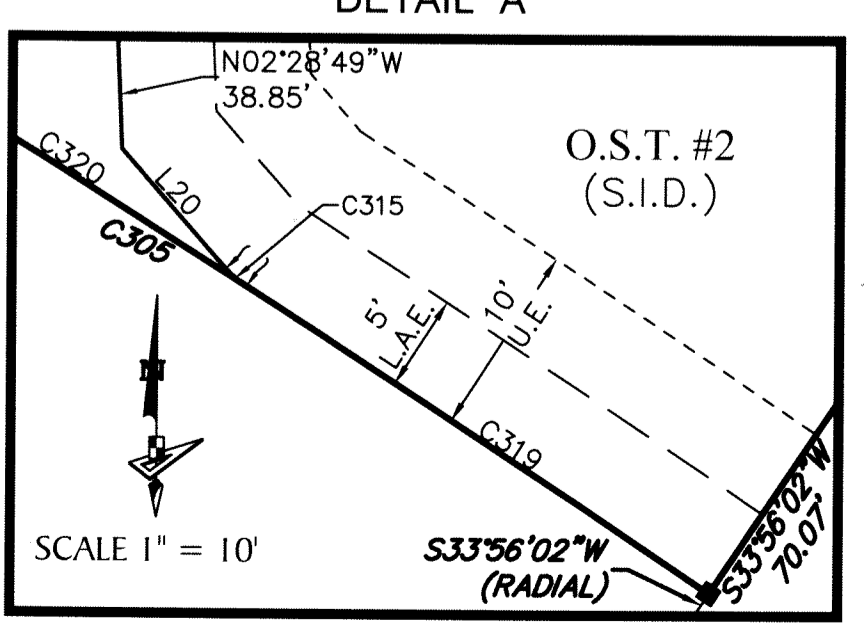
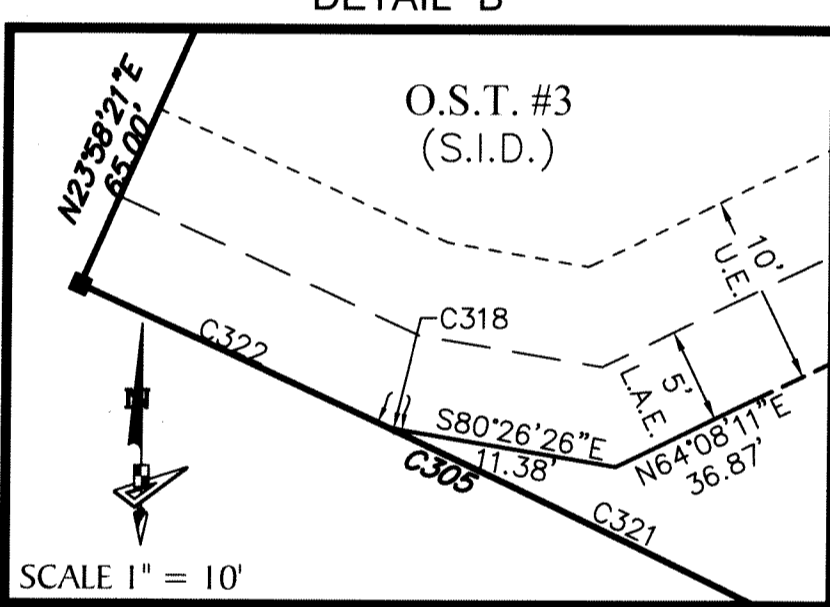
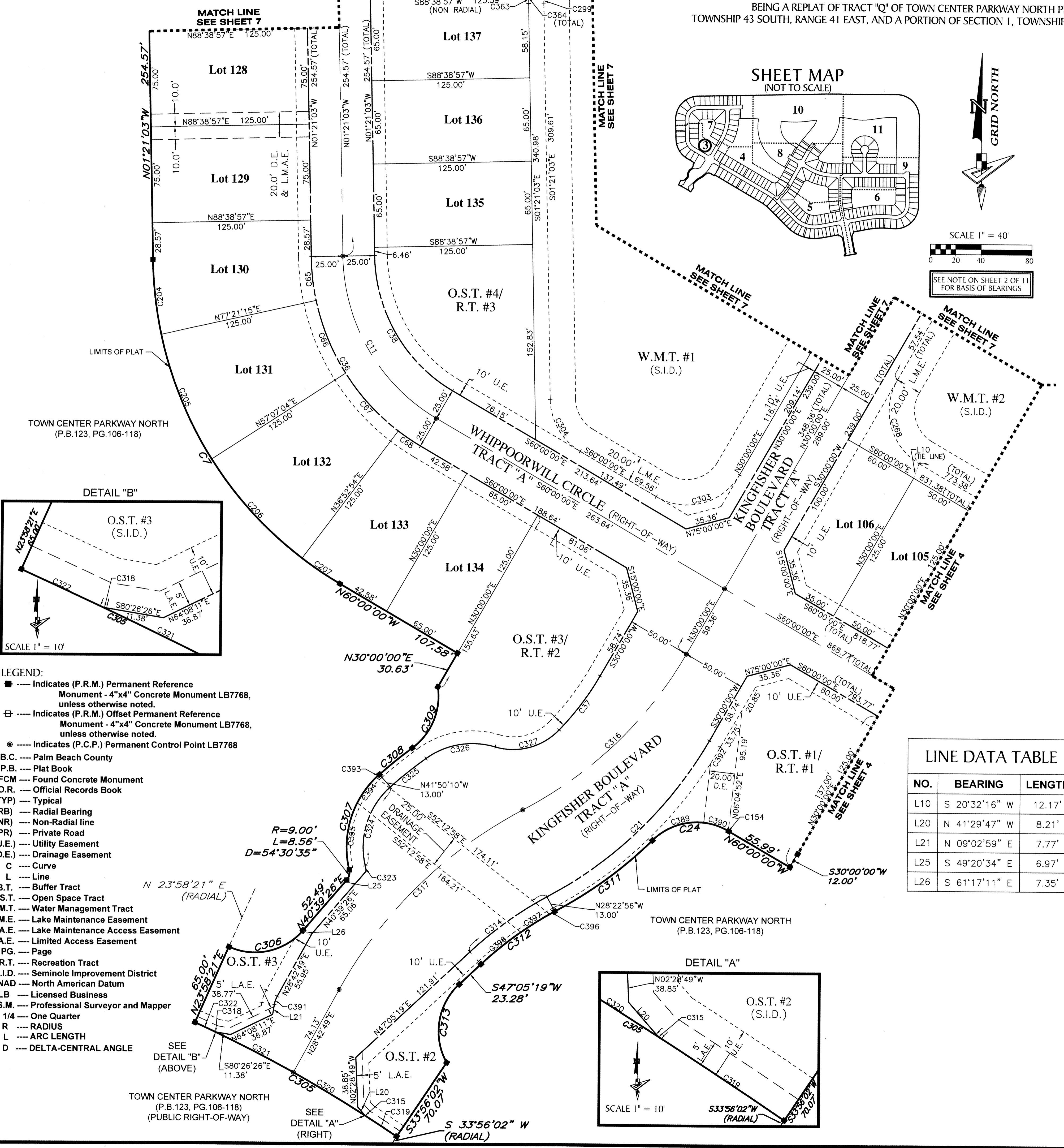
BEING A REPLAT OF TRACT "Q" OF TOWN CENTER PARKWAY NORTH PER PLAT BOOK 123, PAGE 106-118, BEING A PORTION OF SECTION 6, TOWNSHIP 43 SOUTH, RANGE 41 EAST, AND A PORTION OF SECTION 1, TOWNSHIP 43 SOUTH, RANGE 40 EAST, CITY OF WESTLAKE, PALM BEACH COUNTY, FLORIDA



SEE NOTE ON SHEET 2 OF 11 FOR BASIS OF BEARINGS

CURVE DATA TABLE					
NO.	RADIUS	DELTA	ARC	CHORD	BEARING
C7	300.00'	058°38'57"	307.09'	293.85'	N 30°40'32" W
C11	150.00'	058°38'57"	153.54'	146.93'	S 30°40'32" E
C21	325.00'	031°37'04"	179.35'	177.08'	N 45°48'32" E
C24	50.00'	074°33'56"	65.07'	60.57'	S 82°43'02" W
C36	175.00'	058°38'57"	179.14'	171.41'	S 30°40'32" E
C37	225.00'	013°33'06"	53.22'	53.09'	S 36°46'33" W
C38	125.00'	058°38'57"	127.95'	122.44'	S 30°40'32" E
C65	175.00'	011°17'42"	34.50'	34.44'	S 06°59'54" E
C66	175.00'	020°14'10"	61.81'	61.49'	S 22°45'51" E
C67	175.00'	020°14'10"	61.81'	61.49'	S 43°00'01" E
C68	175.00'	006°52'54"	21.02'	21.01'	S 56°33'33" E
C154	50.00'	000°28'27"	0.41'	0.41'	N 60°14'14" W
C204	300.00'	011°17'42"	59.14'	59.05'	S 06°59'54" E
C205	300.00'	020°14'10"	105.96'	105.41'	S 22°45'51" E
C206	300.00'	020°14'10"	105.96'	105.41'	S 43°00'01" E
C207	300.00'	006°52'54"	36.03'	36.01'	S 56°33'33" E
C268	48.00'	090°00'00"	75.40'	67.88'	S 15°00'00" E
C299	48.00'	089°58'00"	75.37'	67.86'	S 43°37'57" W
C303	48.00'	090°00'00"	75.40'	67.88'	N 75°00'00" E
C304	48.00'	058°38'57"	49.13'	47.02'	S 30°40'32" E
C305	1050.00'	009°57'40"	182.55'	182.32'	N 61°02'48" W
C306	50.00'	073°18'55"	63.98'	59.70'	N 77°18'54" E
C307	76.00'	062°00'59"	82.26'	78.30'	N 17°09'21" E
C308	347.20'	005°28'04"	33.13'	33.12'	N 50°53'52" E
C309	50.00'	062°29'15"	54.53'	51.87'	N 22°23'17" E
C311	338.00'	016°11'00"	95.47'	95.15'	S 53°31'34" W
C312	281.00'	014°31'45"	71.26'	71.07'	S 54°21'11" W
C313	50.00'	076°34'01"	66.82'	61.96'	S 08°48'18" W
C314	294.00'	014°31'45"	74.55'	74.35'	S 54°21'11" W
C315	5.00'	016°09'12"	1.41'	1.40'	N 49°34'22" W
C316	320.00'	032°12'14"	179.86'	177.50'	N 46°06'07" E
C317	350.00'	033°29'26"	204.58'	201.68'	S 45°27'31" W
C318	5.00'	015°20'59"	1.34'	1.34'	S 72°45'57" E
C319	1050.00'	001°35'00"	29.02'	29.01'	N 56°51'28" W
C320	1050.00'	003°38'11"	66.64'	66.63'	N 59°28'04" W
C321	1050.00'	003°48'18"	69.73'	69.72'	N 63°11'18" W
C322	1050.00'	000°56'11"	17.16'	17.16'	N 65°33'33" W
C323	22.00'	011°04'13"	4.25'	4.24'	N 08°19'03" W
C324	63.00'	062°00'59"	68.19'	64.91'	S 17°09'21" W
C325	334.20'	006°08'52"	35.86'	35.84'	S 51°14'16" W
C326	63.00'	052°03'56"	57.25'	55.30'	S 80°20'40" W
C327	50.00'	062°49'31"	54.83'	52.12'	N 74°57'52" E
C363	60.00'	006°33'30"	6.87'	6.86'	S 01°55'42" W
C364	60.00'	089°58'00"	94.21'	84.83'	S 43°37'57" W
C389	50.00'	050°31'28"	44.09'	42.68'	S 70°41'48" W
C390	50.00'	023°34'02"	20.57'	20.42'	N 72°15'28" W
C391	20.00'	019°39'50"	6.86'	6.83'	S 18°52'54" W
C392	335.00'	002°32'18"	14.84'	14.84'	N 31°16'09" E
C393	76.00'	002°29'50"	3.31'	3.31'	S 46°54'55" W
C394	76.00'	018°56'26"	25.12'	25.01'	S 36°11'47" W
C395	76.00'	040°34'43"	53.83'	52.71'	S 06°26'13" W
C396	281.00'	000°54'18"	4.44'	4.44'	S 61°09'54" W
C397	281.00'	005°26'02"	26.65'	26.64'	S 57°59'44" W
C398	281.00'	008°11'24"	40.17'	40.13'	S 51°11'01" W

LINE DATA TABLE		
NO.	BEARING	LENGTH
L10	S 20°32'16" W	12.17'
L20	N 41°29'47" W	8.21'
L21	N 09°02'59" E	7.77'
L25	S 49°20'34" E	6.97'
L26	S 61°17'11" E	7.35'



- LEGEND:**
- Indicates (P.R.M.) Permanent Reference Monument - 4"x4" Concrete Monument LB7768, unless otherwise noted.
 - ⊕ Indicates (P.R.M.) Offset Permanent Reference Monument - 4"x4" Concrete Monument LB7768, unless otherwise noted.
 - Indicates (P.C.P.) Permanent Control Point LB7768
 - P.B.C. --- Palm Beach County
 - P.B. --- Plat Book
 - FCM --- Found Concrete Monument
 - O.R. --- Official Records Book
 - (TYP) --- Typical
 - (RB) --- Radial Bearing
 - (NR) --- Non-Radial line
 - (PR) --- Private Road
 - (U.E.) --- Utility Easement
 - (D.E.) --- Drainage Easement
 - C --- Curve
 - L --- Line
 - B.T. --- Buffer Tract
 - O.S.T. --- Open Space Tract
 - W.M.T. --- Water Management Tract
 - L.M.E. --- Lake Maintenance Easement
 - L.A.E. --- Lake Maintenance Access Easement
 - L.A.E. --- Limited Access Easement
 - PG. --- Page
 - R.T. --- Recreation Tract
 - S.I.D. --- Seminole Improvement District
 - NAD --- North American Datum
 - LB --- Licensed Business
 - P.S.M. --- Professional Surveyor and Mapper
 - 1/4 --- One Quarter
 - R --- RADIUS
 - L --- ARC LENGTH
 - D --- DELTA-CENTRAL ANGLE

GeoPoint
Surveying, Inc.

4152 W. Blue Heron Blvd.
Suite 105
Riviera Beach, FL 33404
Phone: (561) 444-2720
www.geopointsurvey.com
Licensed Business Number LB 7768